

**hidealite**  
choice

We focus on sustainability using recycled material for creating innovative luminaires, as well as replaceable LEDs and drivers.

**Luminaires built for the future!**

## PIXO M I GREY

Pixo isn't just a wall luminaire, it's a style icon – an ultimate luminaire for indoor or outdoor use in private and public environments. It lights up not only your wall, but also your taste for Nordic design. Easily installed dimmable luminaire in two sizes for direct connection to 230V. Separate rear element and built in spacer frame in which the rear element is equipped with cable inlets to enable surface-mounted cabling. Replaceable LED and driver. Selectable lumen output and adjustable colour temperature via DIP-switch. Pixo is designed for IP65, IK10 and has durable powder coating for tough outdoor environments. With accessories such as decor fronts, you creates a glare-free light distribution and change its appearance to create a unique style that harmonises with your facade's aesthetics. The decor fronts can be supplied in a choice of colours on request.

### DESCRIPTION

<b>GTIN:</b>	7392971149110
<b>Item Name:</b>	Pixo M I Grey
<b>Warranty:</b>	5 years

## LIGHT TECHNICAL DATA

<b>Max. Luminaire Lumen (lm):</b>	1790
<b>Light Source:</b>	LED
<b>Light Source Included:</b>	Yes
<b>Replaceability:</b>	Replaceable LED by professional, Replaceable Control gear by professional
<b>LED Colour:</b>	Warm White
<b>Colour Temperature (K):</b>	2700, 3000, 4000
<b>Colour Rendering Index (Ra):</b>	>90
<b>Colour Consistency (SDCM):</b>	3
<b>Luminous Intensity (cd):</b>	960
<b>Beam Angle (°):</b>	90
<b>Light sharing:</b>	Symmetric
<b>Light Outlet:</b>	Direct
<b>Number of LED (pcs):</b>	1
<b>Life Time:</b>	h Ta °C
<b>Nominal Life Time (h):</b>	100000
<b>Lumen maintenance 35 000h:</b>	L89
<b>Lumen maintenance 50 000h:</b>	L89
<b>Lumen maintenance 75 000h:</b>	L84
<b>Lumen maintenance 100 000h:</b>	L79
<b>LLMF @ 50 000h:</b>	0.89
<b>LLMF @ 100 000h:</b>	0.79
<b>Life Time Driver:</b>	100 000h/20%
<b>Flicker (PstLM):</b>	0,013
<b>Stroboscopic effect (SVM):</b>	0,091

## TECHNICAL DATA

<b>Voltage (type):</b>	AC
<b>Voltage Interval (V):</b>	220...240V
<b>Voltage Nominal (V):</b>	230
<b>Line Frequency (Hz):</b>	50
<b>Power LED (W):</b>	18
<b>Max. Power Luminaire (W):</b>	21
<b>Max. System Power (W):</b>	21
<b>Max. Efficiency Luminaire (lm/W):</b>	85
<b>Max. Efficiency System (lm/W):</b>	85
<b>Containing light source energy efficiency class (EU) 2019/2015: E</b>	

## OPERATION AND CONNECTION

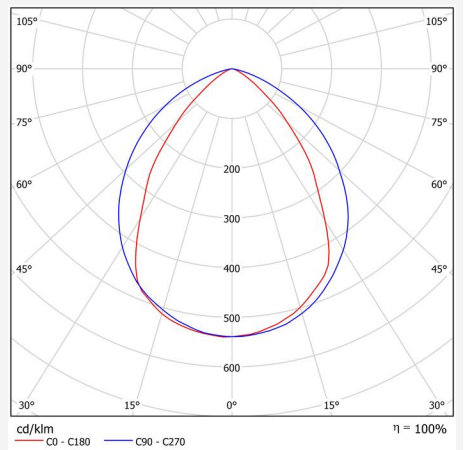
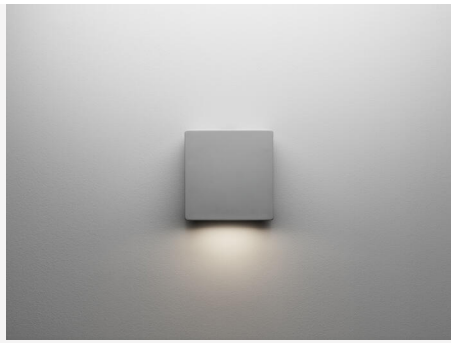
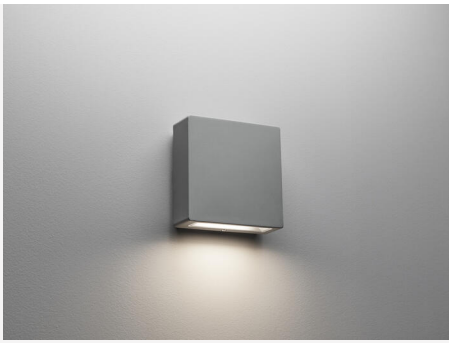
<b>Dimmable:</b>	Yes
<b>Type of Dimming:</b>	DIP-Switch Power, Trailing Edge
<b>Driver Included:</b>	Yes - replaceable
<b>Driver Model:</b>	Constant Current
<b>Driver Type:</b>	Built-in
<b>Driver Manufacturer:</b>	Hide-a-lite
<b>Connection (type):</b>	Quick Terminal
<b>Connection (mm<sup>2</sup>):</b>	5x0,5-2,5
<b>Through Wiring:</b>	Yes
<b>Power Factor <math>\lambda</math>:</b>	0,9
<b>Efficiency (%):</b>	84
<b>Power loss (W):</b>	3,6
<b>Leakage current (mA) (at 230 V, 50 Hz, full load):</b>	0,13
<b>THD (%):</b>	30
<b>Constant Current (mA):</b>	200, 390, 540, 700
<b>Min. Ta (°C):</b>	-20
<b>Max. Ta (°C):</b>	40
<b>Max. Tc (°C):</b>	80
<b>Dimming secondary side:</b>	AM
<b>Protection Against:</b>	Short Circuit, Overload
<b>Inrush current (max/time):</b>	2,5A 70 $\mu$ s
<b>Mains surge protection DM (kV):</b>	2
<b>Mains surge protection CM (kV):</b>	2
<b>Fuse B10 (pcs):</b>	61
<b>Fuse B16 (pcs):</b>	98
<b>Fuse C10 (pcs):</b>	61
<b>Fuse C16 (pcs):</b>	98

## COLOR AND MATERIAL

<b>Material:</b>	Aluminium
<b>Color:</b>	Grey
<b>Environmental Assessment:</b>	Byggvarubedömningen
<b>Available in special color:</b>	Yes

## MEASUREMENT AND INSTALLATION

<b>Operating Environment:</b>	Indoor / dry locations, Indoor / damp locations, Indoor / wet locations, Indoor / bathroom (ceiling area 1), Outdoor
<b>IP Degree of Protection:</b>	65
<b>Protection Class:</b>	I
<b>Installation:</b>	Wall
<b>Mounting Installation:</b>	Screw Mounting
<b>Approval Marks:</b>	CE, a Hide-a-lite Choice
<b>Impact Strength:</b>	IK10
<b>Filament Test IEC 695-2-1(°C):</b>	650
<b>Width (mm):</b>	160
<b>Height (mm):</b>	160
<b>Depth (mm):</b>	68
<b>Weight (kg):</b>	1,24



(mm)

