



OPTIC TRACK XXS KIT 1-PHASE 36° BLACK

Minimalist, dimmable tracklights with replaceable LED and driver – built for the future. Using the DIP-Switch colour temp function, colour temperature is easily adjusted with the touch of a button on the back of the luminaire (not Tune). With reflector technology, high luminous efficacy is ensured with distinct and clear light distribution – perfect as accent lighting when you want to direct the light onto what you want to highlight, but also as general lighting in both private and public environments. Low-build adapter for 1-phase track. For improved glare reduction, the Honeycomb accessory can be added to the luminaire. You can easily replace the reflector with a lens accessory to adjust the light distribution as needed. The kit contains four luminaires, two 1m 1-phase tracks, two connections, two end caps and one straight connector.

DESCRIPTION

| | |
|-------------------|---------------------------------------|
| GTIN: | 7392971151328 |
| Item Name: | Optic Track XXS Kit 1-phase 36° Black |
| Warranty: | 5 years |

LIGHT TECHNICAL DATA

| | |
|-------------------------------------|---|
| Max. Luminaire Lumen (lm): | 390 |
| Light Source: | LED |
| Light Source Included: | Yes |
| Replaceability: | Replaceable LED by professional, Replaceable Control gear by professional |
| LED Colour: | Warm White |
| Colour Temperature (K): | 2700, 3000 |
| Colour Rendering Index (Ra): | >90 |
| Colour Consistency (SDCM): | 3 |
| Luminous Intensity (cd): | 1000 |
| Beam Angle (°): | 36 |
| Light sharing: | Symmetric |
| Light Outlet: | Direct |
| Number of Lamps (pcs): | 1 |
| Number of LED (pcs): | 1 |
| Life Time: | h Ta °C |
| Nominal Life Time (h): | 100000 |
| Lumen maintenance 50 000h: | L90 |
| Lumen maintenance 75 000h: | L84 |
| Lumen maintenance 100 000h: | L81 |
| LLMF @ 50 000h: | 0.9 |
| LLMF @ 100 000h: | 0.81 |
| Life Time Driver: | 100 000h/8% |
| Flicker (PstLM): | 0,036 |
| Stroboscopic effect (SVM): | 0,176 |

TECHNICAL DATA

| | |
|--|------------|
| Adjustable: | Yes |
| Tilttable (°): | 90 |
| Rotatable (°): | 350 |
| Voltage (type): | AC |
| Voltage Interval (V): | 220...240V |
| Voltage Nominal (V): | 230 |
| Line Frequency (Hz): | 50 |
| Power LED (W): | 4 |
| Max. Power Luminaire (W): | 5,4 |
| Max. System Power (W): | 5,4 |
| Max. Efficiency Luminaire (lm/W): | 72,2 |
| Max. Efficiency System (lm/W): | 72,2 |
| Containing light source energy efficiency class (EU) 2019/2015: F | |

OPERATION AND CONNECTION

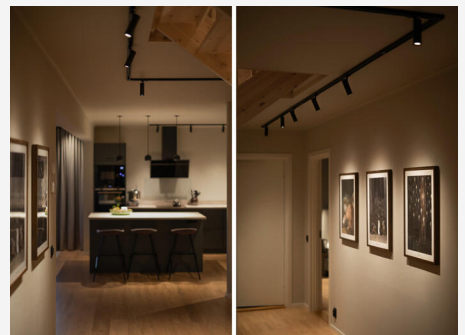
| | |
|---|--|
| Dimmable: | Yes |
| Type of Dimming: | Trailing Edge |
| Driver Included: | Yes - replaceable |
| Driver Model: | Constant Current |
| Driver Type: | Built-in |
| Driver Manufacturer: | Hide-a-lite |
| Connection (type): | 1-phase adapter |
| Power Factor λ: | 0,9 |
| Efficiency (%): | 75 |
| Power loss (W): | 1,4 |
| Leakage current (mA) (at 230 V, 50 Hz, full load): | 0,05 |
| THD (%): | 20 |
| Constant Current (mA): | 110 |
| Min. Ta (°C): | -20 |
| Max. Ta (°C): | 40 |
| Max. Tc (°C): | 85 |
| Dimming secondary side: | AM |
| Protection Against: | Short Circuit, Overheating 120°C, Overload |
| Inrush current (max/time): | 2,8A 42 μ s |
| Mains surge protection DM (kV): | 1 |
| Mains surge protection CM (kV): | 2 |
| Fuse B10 (pcs): | 80 |
| Fuse B16 (pcs): | 130 |
| Fuse C10 (pcs): | 135 |
| Fuse C16 (pcs): | 215 |

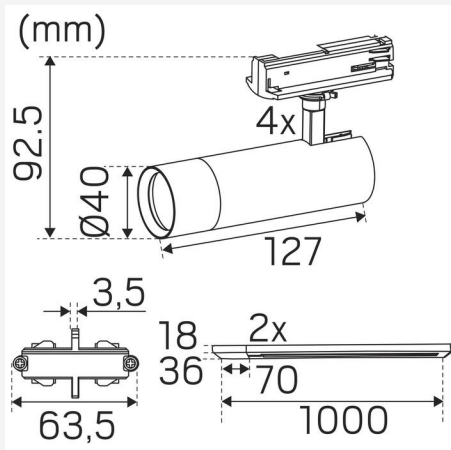
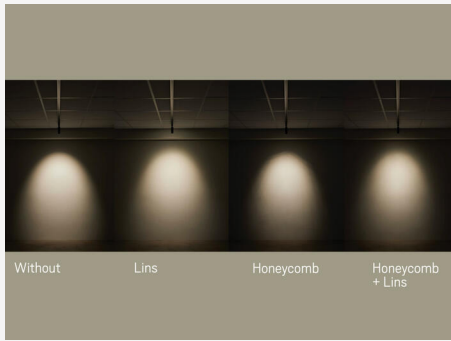
COLOR AND MATERIAL

| | |
|----------------------------------|---------------------|
| Material: | Aluminium |
| Color: | Black |
| Environmental Assessment: | Byggvarubedömningen |

MEASUREMENT AND INSTALLATION

| | |
|---------------------------------------|--------------------------|
| Operating Environment: | Indoor / dry locations |
| IP Degree of Protection: | 20 |
| Protection Class: | I |
| Installation: | Light-track mounting |
| Mounting Installation: | 1-phase Adapter |
| Approval Marks: | CE, a Hide-a-lite Choice |
| Filament Test IEC 695-2-1(°C): | 650 |
| Length (mm): | 127 |
| Height (mm): | 93 |
| Diameter (mm): | 40 |
| Weight (kg): | 2,4 |





| 36° | | 2700K | |
|--------------|-------|---------------|--|
| m | Ø (m) | Lux Emed/Emax | |
| 1m | 0.71 | 728/965 | |
| 2m | 1.43 | 182/241 | |
| 3m | 2.14 | 81/107 | |
| 960cd | | | |

| 36° | | 3000K | |
|---------------|-------|---------------|--|
| m | Ø (m) | Lux Emed/Emax | |
| 1m | 0.68 | 787/1001 | |
| 2m | 1.36 | 197/250 | |
| 3m | 2.04 | 87/111 | |
| 1000cd | | | |

