



A+

1218 MULTI BRUSHED STEEL 2700K

Low build mini downlight with the latest multichip technology from Citizen for recessing into furniture and suspended ceilings in an LED model. 3.5W/350 mA that corresponds to and replaces 25-30W halogen luminaires. Its IP44 design means it suits many different environments. Suitable in appliance boxes, which makes it easy to install. 1218 is adjustable, which means you can choose what to illuminate in the room yourself. This luminaire has a long 50.000-hour life time (L70) at Ta 25°.

DESCRIPTION

GTIN:	7392971123905
Item Name:	1218 Multi Brushed steel 2700K

LIGHT TECHNICAL DATA

Light Source:	LED
Light Source Included (type):	LED not exchangeable
LED Colour:	Warm White
Colour Temperature (K):	2700
Colour Rendering Index (Ra):	>80
Colour Consistency (SDCM):	3
Luminous Intensity (cd):	150
Luminaire Lumen (lm):	230
Beam Angle (°):	70
Life Time:	(L70) 50 000h Ta 25°C
Nominal Life Time (h):	50000

TECHNICAL DATA

Adjustable:	Yes
Tilttable (°):	15
Power LED (W):	3,5
Power Luminaire (W):	3,5
Energy Efficiency Class:	A+

OPERATION AND CONNECTION

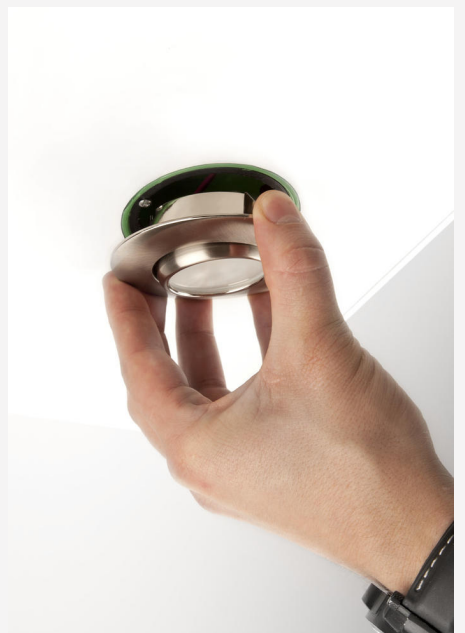
Driver Model:	Constant Current
Connection (type):	Mini Contact
Length Connection (cm):	200
Constant Current (mA):	350
Operating Temperature:	-25...+40
Dimmable:	Yes

COLOR AND MATERIAL

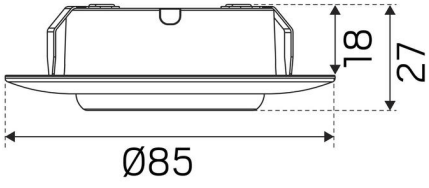
Material:	Aluminium
Color:	Brushed Steel

MEASUREMENT AND INSTALLATION

Operation Environment:	Indoor
IP Degree of Protection:	44
Installation:	Built-in
Mounting Installation:	Tension Spring
Ceiling Thickness Interval (mm):	5
Height Surface Mounted (mm):	5
Fire Safety Marks:	MM-mark, Not in insulation without protection cover
Protection Cover:	7466700, 7466701, 7466702
Approval Marks:	CE
Protection Class:	III
Height (mm):	27
Diameter (mm):	85
Weight (kg):	0,9
Min. Built-in (mm):	Ø58x18
Height Recessed Part (mm):	18
Min. Built-in (Ø mm):	58
Max. Built-in (Ø mm):	58



(mm)



This luminaire contains built-in LED lamps.

The lamps cannot be changed in this luminaire

hidealite 7463103

874/2012

A+
A+
A
C
D
E

LED

The image shows a standard European energy efficiency scale with levels A+++ (green), A+ (green), A (yellow-green), C (yellow), D (orange), and E (red). The levels from A+ to E are crossed out with a red diagonal line. To the right of the scale, the letters 'LED' are written vertically, with a bracket indicating that the scale applies to LED lamps.

